


A Review of Core Processes: Now where did all those determinants come from?

L. Kay Bartholomew, Guy S. Parcel,
Gerjo Kok, Nell H. Gottlieb

Planning Health Promotion
Programs: An Intervention Mapping
Approach



© 2005 University of Texas Health Science Center at Houston School of Public Health
Permission for Classroom Use Granted by Kay Bartholomew

Core processes for accessing theory and evidence in intervention planning

- Pose a question
- Brainstorm provisional list of answers
- Review literature related to topic
- Access and use theory
- Conduct new research and acquire new data
- Formulate final answers

© 2005 University of Texas Health Science Center at Houston School of Public Health
Permission for Classroom Use Granted by Kay Bartholomew

Pose a question for determinants

Formulate or reformulate the question

- Before you asked why do people engage in the risk behavior (determinants)
- Now you ask why [would] people engage in the behavior and the specific performance objectives? (determinants)
- Why [would] people engage in changing the environmental conditions? (determinants)

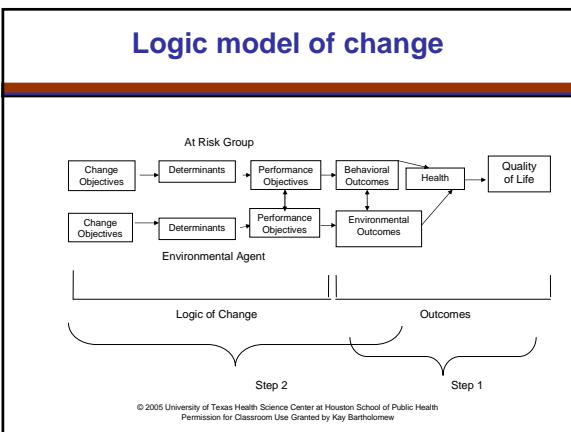
© 2005 University of Texas Health Science Center at Houston School of Public Health
Permission for Classroom Use Granted by Kay Bartholomew

Problems with the term

What is a “determinant”?

- Categories of evidence (Rakowski and Breslau, 2004)
- ‘barriers and facilitators’
- ‘correlates’
- ‘predictors’
- ‘risk factors’
- ‘determinants’
- In large part dependent on the study design and methods of data analysis

© 2005 University of Texas Health Science Center at Houston School of Public Health
Permission for Classroom Use Granted by Kay Bartholomew



Brainstorm provisional answers

➡ Question:

© 2005 University of Texas Health Science Center at Houston School of Public Health
Permission for Classroom Use Granted by Kay Bartholomew

Why would?

Personal determinants

External determinants

© 2005 University of Texas Health Science Center at Houston School of Public Health
Permission for Classroom Use Granted by Kay Bartholomew

Review literature

A systematic review is a matter of validity

Essentially that you have controlled bias in your selection of what answers to pay attention to

© 2005 University of Texas Health Science Center at Houston School of Public Health
Permission for Classroom Use Granted by Kay Bartholomew

How to review literature

- Use the determinants question to plan a search
- Define criteria for including/excluding studies
- Specify electronic data bases
- Specify search terms
- Decide on non-electronic search strategies
- Document the search strategies
- Present data in "evidence tables"
- Consider effect sizes not just statistical significance

© 2005 University of Texas Health Science Center at Houston School of Public Health
Permission for Classroom Use Granted by Kay Bartholomew

Good questions for lit reviews

- 1) Description of what types of people are of interest, including what people have the problem and what specific population and settings are the focus
- 2) Types of interventions or other study questions that will be the focus, including the types of comparisons (control or comparison groups) that will be acceptable
- 3) Types of outcomes that will be considered
- 4) Types of study designs that can answer the question.

© 2005 University of Texas Health Science Center at Houston School of Public Health
Permission for Classroom Use Granted by Kay Bartholomew

The boundaries of a search

- The problem in the population of interest
- +
- Similar problems in the population of interest
- +
- The problem in another population

© 2005 University of Texas Health Science Center at Houston School of Public Health
Permission for Classroom Use Granted by Kay Bartholomew

Conceptual Relevance – Example from PANDA (Chapter 13)

- Intervention to reduce the number of women who stop smoking successfully during pregnancy but who return to smoking after the birth -- No such programs had been reported in the published literature
- So, a challenge to identify populations that would be conceptually relevant
- Advice from colleagues regarding the smoking literature led to a search on preventing return to smoking by victims of heart attacks (who were not able to smoke while they were hospitalized)
- Stopping smoking because of a temporary, acute event and external constraints had some parallels to pregnant women; on the other hand, the population was older and primarily male
- Nevertheless, some of these studies revealed the importance of attributions for stopping smoking and other hypotheses regarding moderating variables that would be important in developing the PANDA intervention (Mullen, et al., 1999).

© 2005 University of Texas Health Science Center at Houston School of Public Health
Permission for Classroom Use Granted by Kay Bartholomew

So, let's think about a search

Question:

Deciding what years:

Deciding what sources:

© 2005 University of Texas Health Science Center at Houston School of Public Health
Permission for Classroom Use Granted by Kay Bartholomew

Organizing the data

Authors (year)	Purpose & design	Measures	Population/Sample	Findings	Notes

© 2005 University of Texas Health Science Center at Houston School of Public Health
Permission for Classroom Use Granted by Kay Bartholomew

Accessing and using evidence and theory

Three approaches to search literature for applicable theories

- Topic
- Concept/Construct
- General Theories

© 2005 University of Texas Health Science Center at Houston School of Public Health
Permission for Classroom Use Granted by Kay Bartholomew

Topic-related approach

- Theories that were used to research the topic
- Theories that were used to research similar or related topics
- Add and remove items from the provisional list

© 2005 University of Texas Health Science Center at Houston School of Public Health
Permission for Classroom Use Granted by Kay Bartholomew

Concept-related approach

- Start with concepts in provisional list
- Track concepts to theoretical constructs
- Track theoretical constructs to theories
- Add and remove concepts to the provisional list

© 2005 University of Texas Health Science Center at Houston School of Public Health
Permission for Classroom Use Granted by Kay Bartholomew

General theories approach

- Review familiar theories
after
- You have applied the other two approaches

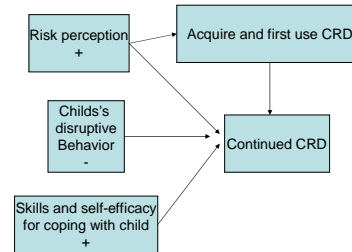
© 2005 University of Texas Health Science Center at Houston School of Public Health
Permission for Classroom Use Granted by Kay Bartholomew

Criteria for answers

- All suggestions are useful
- Plausible?
- Is it a process?
- Can it be presented in a model?
- What is the supporting evidence?
- What is the level of supporting evidence?

© 2005 University of Texas Health Science Center at Houston School of Public Health
Permission for Classroom Use Granted by Kay Bartholomew

Final model for CRD use



© 2005 University of Texas Health Science Center at Houston School of Public Health
Permission for Classroom Use Granted by Kay Bartholomew

Conduct new research

Pose remaining question(s)

What type of questions might be left after the literature review?

Qualitative methods

- Ethnographic interviews, focus groups, problem-posing methods, nominal group process, photovoice

Quantitative methods

- Surveys, disease registries

© 2005 University of Texas Health Science Center at Houston School of Public Health
Permission for Classroom Use Granted by Kay Bartholomew

Formulate final answers

- Relevance = Strength of associations
- Changeability = How easy to influence

© 2005 University of Texas Health Science Center at Houston School of Public Health
Permission for Classroom Use Granted by Kay Bartholomew

So, let's look back at our provisional list – what goes and what stays?

Personal determinants

External determinants

© 2005 University of Texas Health Science Center at Houston School of Public Health
Permission for Classroom Use Granted by Kay Bartholomew